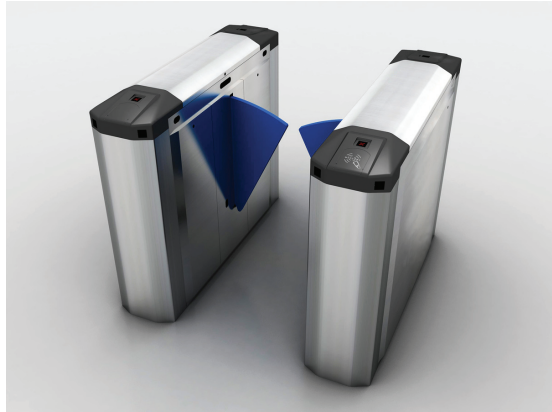


Micro ID Flap Gate



- Alarm function: When there is an illegally force entry, alarm will be triggered automatically and the motor will lock up.
- This model comes with latest second generation of mechanism which is silent.
- Anti-pinch function: flap gate has mechanical / infrared induction for anti-pinch function.
- The flap gate has a function to handle tailgating or people walking on the different direction.
- The flap gate is always on lock position and if there is an intrusion, there would be an alarm.
- The flap gate can work with any door access & biometric recognition system.
- The flap gate is bidirectional (pedestrian can enter and exit from one pair of turnstiles).

Specification:

Housing Material	304 stainless steel	Time of Opening / Closing	0.6 sec
Working Voltage	AC220V±10% 50±10% Hz	Pass Speed	40 person/min (open), 25-30 person/min (closed)
Drive Motor	DC24V brush motor	Reset time after break down	10 sec
Size	1200 x 300 x 1000 mm	Time to work after power on	3 sec
Retractable Arm Length	260 mm	Operation Temperature	-10°C ~ +70°C
Passing Width	≤580 mm	Operation Humidity	≤90%
Normal Running Life	>3 million	Communication Interface	RS485
Direction	Single or bi-directional (optional)	Input Interface	+12V level signal or pulse width >100ms, drive current >10mA

Dimension:

