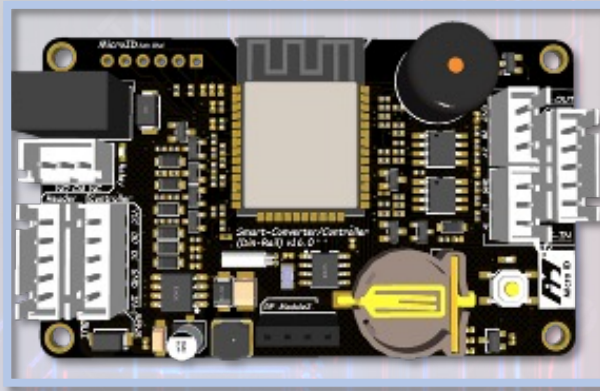


Smart Controller (Smart Converter)



The Micro ID's Smart Controller for access control is equipped with a variety of advanced features designed to enhance security and convenience. It supports up to 2500 cardholders and 4 common PINs, making it suitable for both medium-sized organizations and small teams. The controller includes a push button for manual door release, a door sensor for monitoring door status, and supports two readers for comprehensive access. It offers flexible access management with 9 configurable time zones and 20 holiday schedules. The timer/sounder feature allows for automated door control, including permanent open/close settings. Modern access methods are also supported, such as encrypted Bluetooth access and dynamic QR codes, providing secure and convenient entry options. Additionally, the 433MHz RF remote or Peer2Peer slave feature enables remote access control. This combination of traditional and modern access control features ensures a high level of security and operational efficiency.

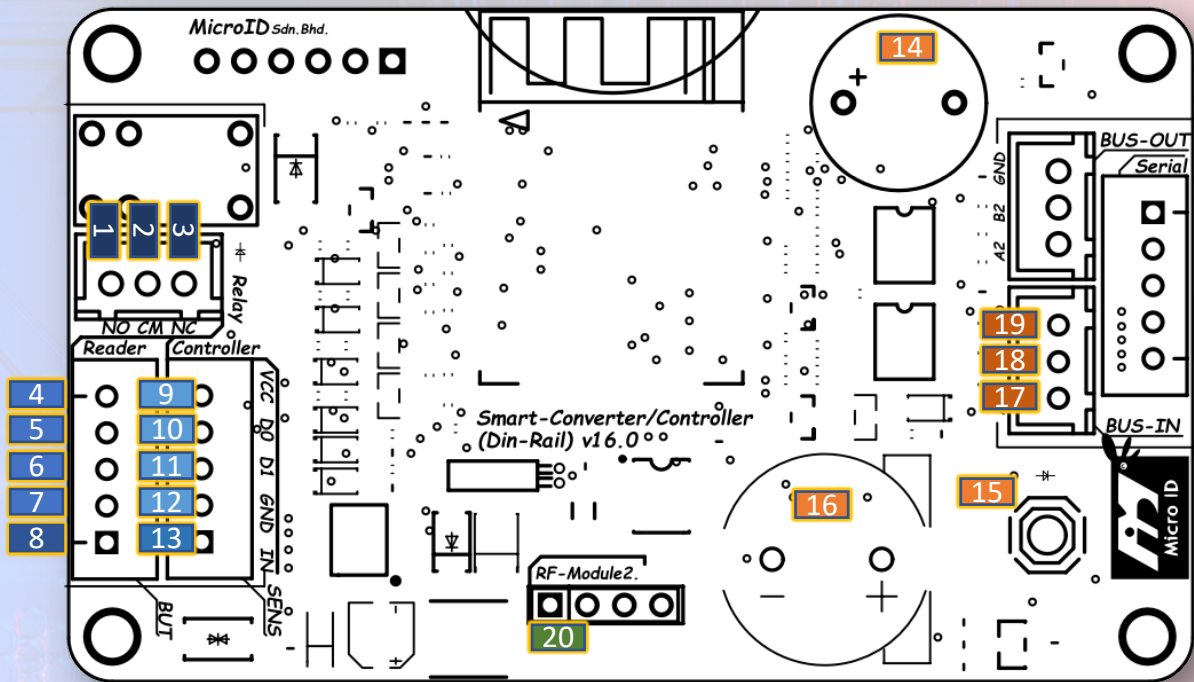
Performance

Operating Frequency	2.4Ghz (WiFi, Peer2Peer, Bluetooth)
Power Output	0dBm – 20dBm, default 20dBm
Antenna	PCB
Communication Interfaces	Wiegand 26/34/66 , RS-485
Expanding Interfaces	WiFi
Application Software	Web Interface Configuration, Phone App, PC App

Mechanical/Electric Performance

Power	DC 12V
Power Assumption	145mW ideal, 170mW (Peer2Peer, at card transmit), 480mW (WiFi or Bluetooth).
Dimension	W45 x L76 x H12mm, (Bare Board)
Channels	0 - 12Ch (13Ch) (Peer2Peer Selection)

Wiring Diagram



RELAY-1

- 1 – NO
- 2 – COM
- 3 – NC

READER 2 (Controller)

- 9 – VCC
- 10 – D0
- 11 – D1
- 12 – GND
- 13 – DOOR SENSOR

14 – Buzzer

15 – Config/Flash

16 – RTC Battery

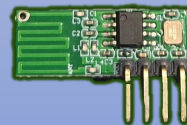
RS485-1

- 17 – A
- 18 – B
- 19 – GND

READER 1

- 4 – VCC
- 5 – D0
- 6 – D1
- 7 – GND
- 8 – PUSH BUTTON

20 – RF Remote



Note* 13 – DOOR
SENSOR / PUSH BUTTON

Installation Instruction

AP Mode Setup: Quick Guide

Follow these steps to place the Smart Controller in AP mode for configuration:

Step 1: Config Button Press

- Press and hold the config button on the board for 10 seconds.

Step 2: LED and Buzzer Indication

- Wait for the blue LED to blink rapidly, accompanied by a beep from the buzzer.

Step 3: Connect to Wi-Fi AP

- Check for available Wi-Fi networks and connect to "MICROID-xxxxxx." The default password is microid1234.

Step 4: Access Configuration Page

- Open your web browser and enter either <http://192.168.4.1> or <http://microid.local> in the address bar.

Step 5: Login to Configuration Page

- Once the webpage opens, use the default username admin and password admin to log in.

Step 6: Configuration

- Now, you have access to the configuration settings. Customize the parameters as needed.

You're now ready to configure the settings of your Smart Controller in AP mode. Ensure a secure connection by updating the default login credentials and follow any additional security measures recommended in the user manual. For further assistance, refer to the user manual or contact our support team.

