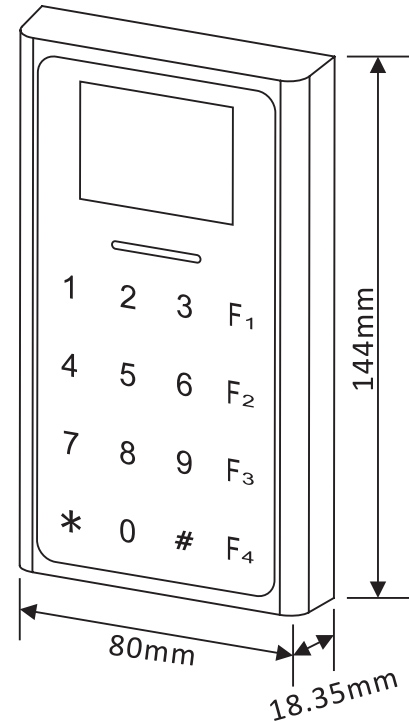


A. Package Content

- Controller x 1, metal bracket x 1, accessory pack x 1, cable set x 1
- Accessory pack : screw x 4, screw anchors x 4, black screw x 3,
rubber pad x 2, diode (1N4004) x 1
- Cable : 2 pin x 1, 5 pin x 1, 6 pin x 1, 8 pin to RJ45 x 1

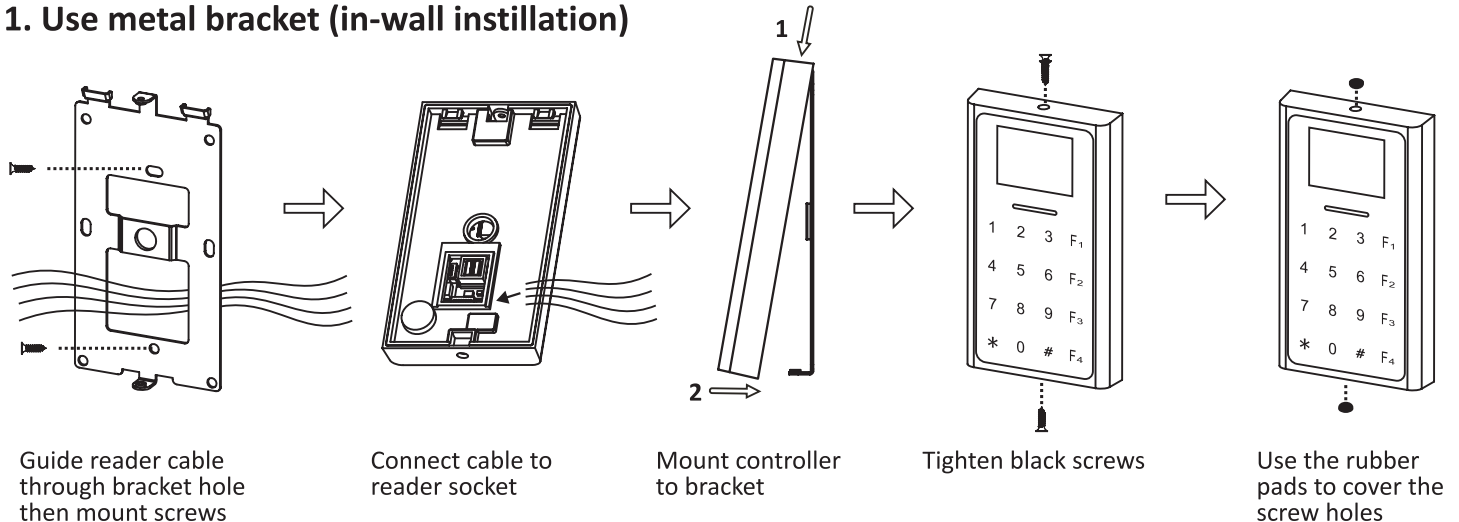
B. Specification

- Voltage range : DC 9~24V
- Power consumption : DC 12V (350mA)
- Wiegand range : Max 100M
- Relay : DC 30V~2A/ Type C
- LED : 3 colors
- Recommend
- Shielded cable, Cat-5e
- Notice
- Power dapter; should be IEC/EN 62368-1 certified

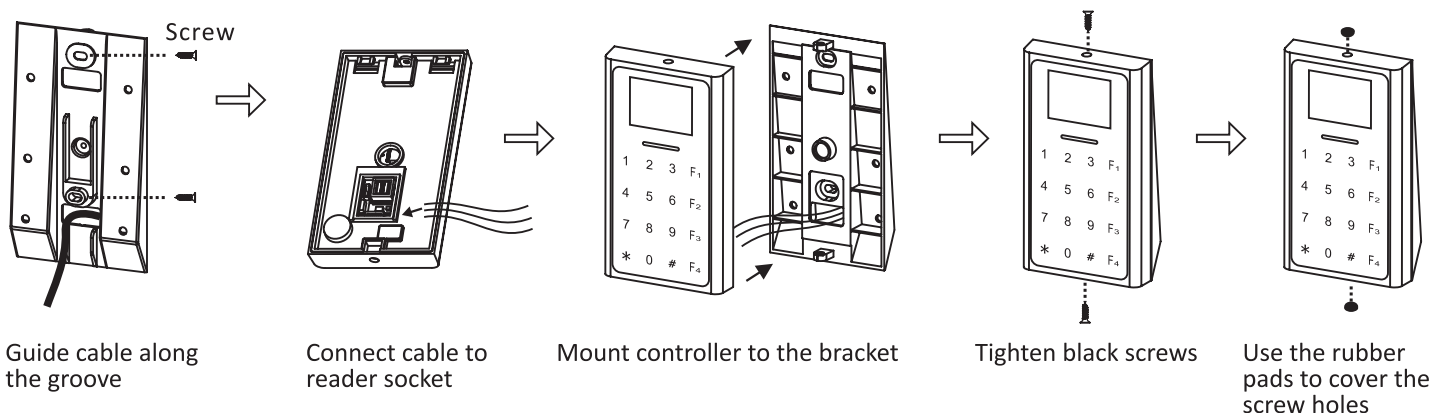


C. Installation

1. Use metal bracket (in-wall instillation)



2. ★ Optional (Using the angled bracket, for surface installation)



D. Cable description

Cable	No.	Color	Function	Description
5PIN (J4)	1	YELLOW/ BLACK	RS-485+	FOR RELAY BOX MX60R
	2	BLUE/ BLACK	RS-485-	
	3	ORANGE	FIRE	FIRE ALARM IN
	4	GREEN/ WHITE	WG IN D0	WIEGAND IN
	5	VIOLET/ WHITE	WG IN D1	

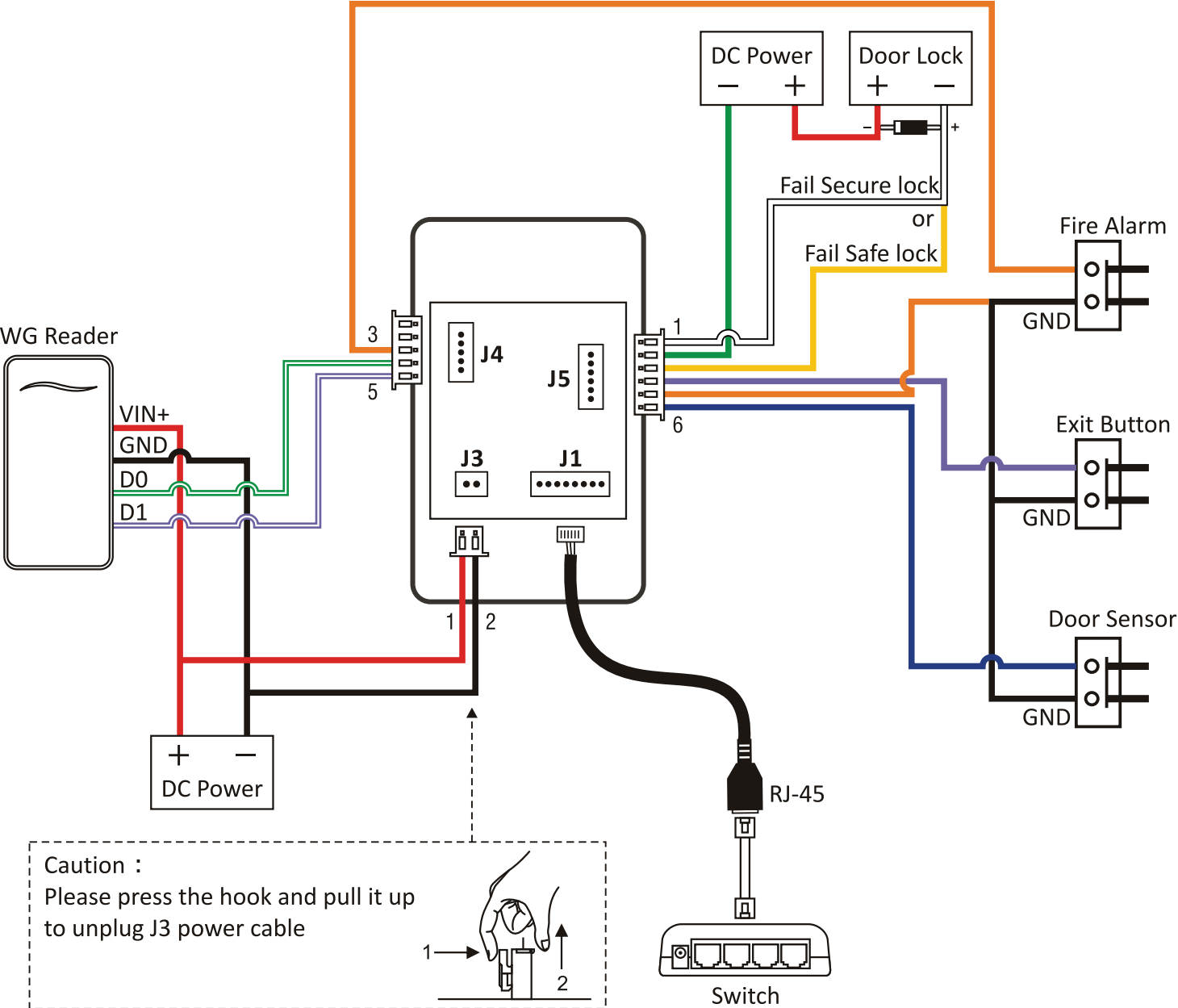
Cable	No.	Color	Function	Description
2PIN (J3)	1	RED	DC VIN +	DC 9~24V (12V/ 350mA)
	2	BLACK	DC VIN -	

Cable	No.	Color	Function	Description
6PIN (J5)	1	White	NO	DOOR LOCK
	2	Green	COM	
	3	Yellow	NC	
	4	Violet	EXIT	EXIT BUTTON
	5	Orange	GND	GND
	6	Blue	SENSOR	DOOR SENSOR

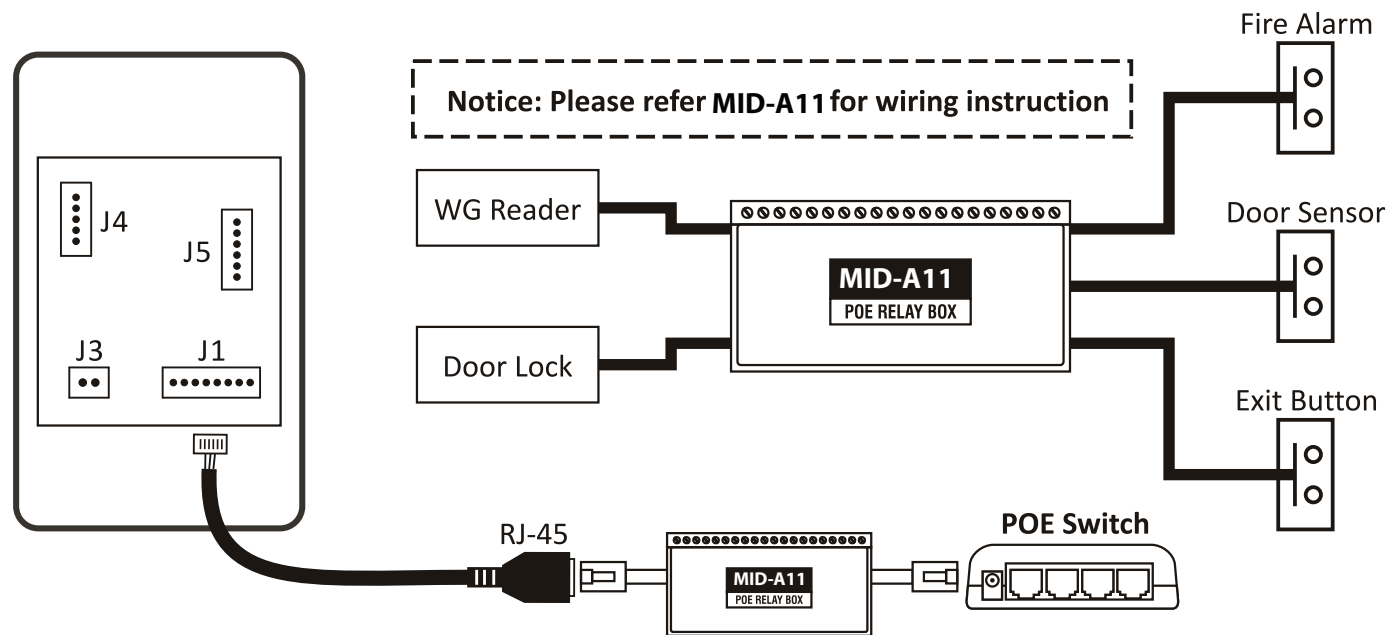
Cable	No.	Color	Function	LAN Cable	Description
8PIN (J1)	1	BROWN	TX+	ORANGE/ WHITE	Ethernet
	2	VIOLET	TX—	ORANGE	
	3	WHITE	RX+	GREEN/ WHITE	
	4	BLUE	RX—	GREEN	
	5	GREEN	N/A		
	6	YELLOW			
	7	BLACK			
	8	RED			

E. Power Source Structure

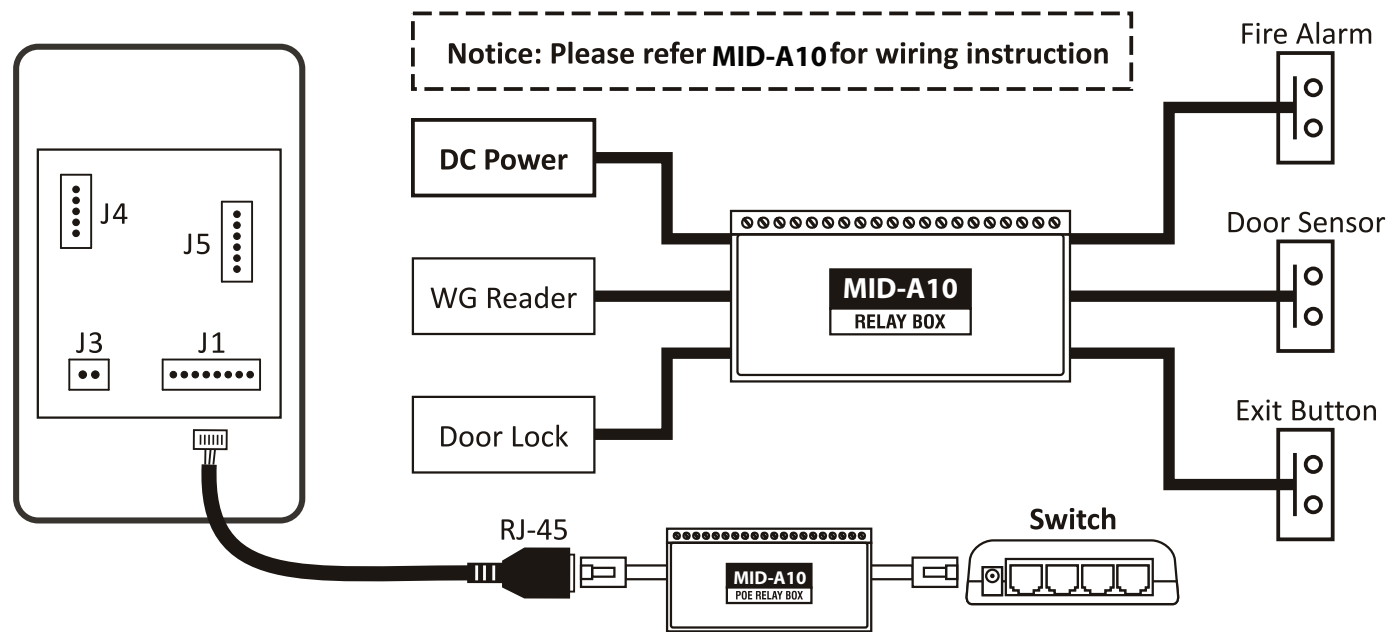
1. From DC Power Supply/ Power Adapter



2. From PoE Secure Box A11



3. From Secure Box A10



G. Notice

