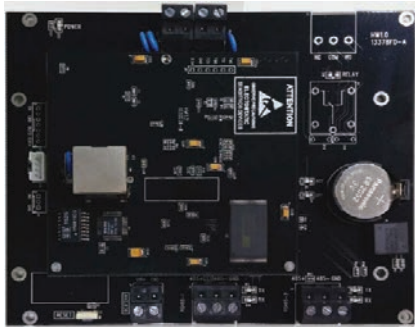




# MX60L2 Elevator Access Controller



- Web based controllable
- Support WG reader or RS-485 reader application structure
- MX60R and Wiegand reader is needed when running on WG reader structure
- RS-485 Reader is using when running on RS-485 reader structure
- Up to 20,000 user cards holder's capacity
- Store up to 65,535 events history
- Connect to 8 units MX60F to control 128 floors per system
- Support up to 7-storey hall call per system
- 10 layers bypass time zone for user access authority
- Sent offline log data automatically
- Sales Code: XL-MX60L2-001

### Specification:

Lift Control	1	Web Base Management	Yes
Floor Control	Black list: 80 floors (Need 5 pcs of MX60F) White list: 128 floors (Need 8 pcs of MX60F)	RS-485	2 (1) Intercom (2) MX60F & RS-485 Reader
Call Lift	7	Ethernet Interface	10/100M Base-T
Verification Mode	White, Black, Combo list	Communication Environment	LAN/WAN
User Type	5 Types (normal user/super user/visitor/guard/defense)	Communication Method	TCP/IP / RS-485 / Wiegand (Need MX60R)
User Capacity	20,000 users	Power Consumption	440mA ± 5%
Log Capacity	65,535 records	Operation Voltage	9 ~ 24 VDC / 1A
System Log	1,536 records	Relay Output Current (max)	30VDC, 2A
Reader Type	RS485 / WG (Need MX60R)	Operation Temperature	0 ~ 65°C
Time Sets/Zones/Group	Yes	Operation Humidity	5 ~ 8% RH
Holiday Dates	Yes	Dimension	138 x114 x 27 mm
Inputs	3 (Fire Alarm, Maintenance, External)	Weight	122g

### MX60F Elevator Floor Controller

MX60F is a 16 outputs relay box and floor security controller. Each relay output controls a floor access to an elevator. When there are over 16 floors, you can connect more MX60F to extend the floor control number. You can connect 8 pcs of MX60F to control 128 floors.



- Built-in self-detection device to avoid hand-up
- Provide emergency input contact to eliminates all floors access control
- Function with MX60L or MX60L2
- No limitation for user control, you can just use card number and group setting to control floor, that why will be much easier for system integration
- Built-in 16 relay outputs
- Communication Interface: RS-485
- Relay Output: 16 (1A / 30V DC)
- Operation Power: 9 ~ 24V DC
- Rated Current: 800 mA
- Operation Temperature: 0 ~ 55°C
- Dimension: 179 x 141 x 29 mm
- Weight: 650g
- Sales Code: XL-MX60F-001

## MX60R I/O Relay Board

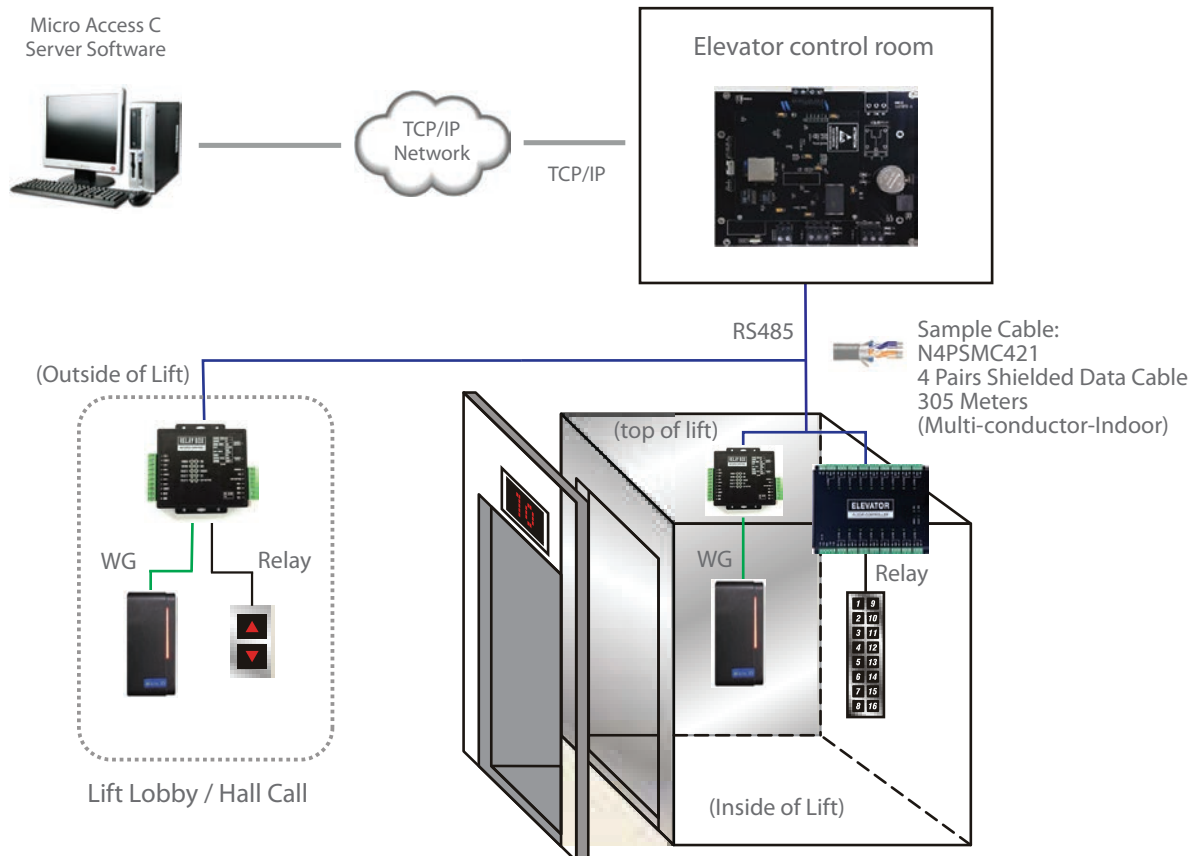


- Compatible with MX60M and MX60L2
- You can use MX60R for a single or multi doors control structure when connect to MX60M
- You can use MX60R as Wiegand reader interface unit when connect to MX60L2
- To detect door sensor is short circuit or open circuit
- Built-in Watch-dog to prevent system hang
- 2 Wiegand inputs, compatible with any brand of Wiegand reader
- Integrated with exit button, door sensor and Wiegand reader
- RS-485 communication control relay for providing the high security level
- In emergency mode, when controller is disconnected, exit button still could have function
- Sales Code: XL-MX60R-001

## Specification:

Communication interface	RS-485	Max. RS-485 distance	1000m
Wiegand input	2 (WG26 / 34 Auto detect)	Max. Wiegand reader distance	80m
Door Relay	1 (3A / 30 VDC)	Door number setting	DIP switch
Alarm Relay	2 (3A / 30 VDC)	Rated power	9 ~ 24 VDC
Dry contact for exit button	1	Rated current	200 ~ 440 mA
Dry contact for sensor	1 (self-detecting)	Operation temperature	0 ~ 55°C
Dry contact for reader	2	Operation humidity	5% ~ 80% RH
LED indicator for reader	2	Dimension	106 x 100 x 26.5 mm
Dry contact for buzzer control	2	Weight	140 g

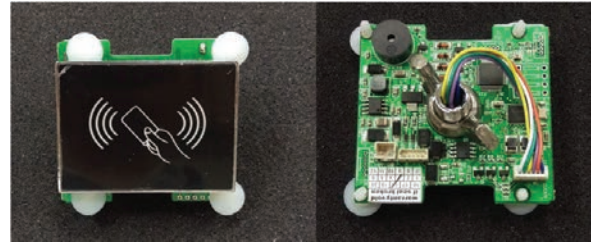
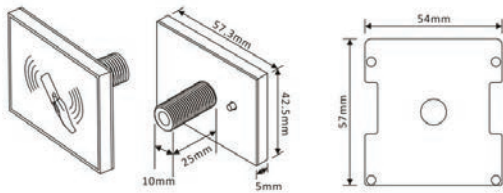
## MX60L2 Wiegand Reader Structure Layout Diagram



## MR3 Elevator Reader



- Compatible with MX60L2 only
- Card Verification and lite design not only can fit the elevator but also easy to install and supplied in each lift
- Only Mifare frequency available, which is most common frequency used nowadays
- Support Match-On-Card function, which can store information of the user in cards, make solution more safety and convenient



## Specification:

RFID card type	Mifare	Card collision algorithm	Yes
Verification time	100ms	Self-diagnostic	Yes
Power consumption	150 mA	Buzzer	Yes
Communication	RS-485	LED	Red / Blue / Green
Transmit distance	1000m	Power requirement	DC 9 ~ 15V (150mA)
ESD protection	+2.5 KV	Operation temperature	-20 ~ 70°C
Built-in Watch Dog	Yes	Dimension	57.3 x 42.5 x 30 mm

## MX60L2 RS-485 Reader Structure Layout Diagram

